



MORRIS

• HAD1101

USER MANUAL

JET HAND DRYER

Please read this manual carefully before use this product



WARNING

If you don't use this unit properly or follow the safety guidelines carefully, it would lead to serious personal injury.



Prohibited

- **Do not open the front panel.**
Otherwise, This may get an electric shock.



Do not use in the bathtub or shower room.

- **Do not use in a wet environment, for example, near the bathroom where it may get the direct water and the places where the condensation may form.**



Do not allow the unit get wet.

- **Do not allow the unit get wet.**
Otherwise, it will cause electric shock.



Prohibit disassembling

- **Do not modify and disassemble the unit unnecessarily.**
Otherwise, this may cause a fire, electric shock, or personal injury.



Important! Always follow instructions closely.

- **Use a single-phase AC 220~240V/50/60Hz power supply.**
- **Use within the required voltage, as voltage exceeding 220V + 10% will fail the unit.**
Using an incorrect power supply may cause fire, electric shock and malfunction.
- **Use separate line**
Using any other electric appliance with the same line, may cause the branch socket to become very hot and cause fire.
- **Turn off the power switch before inspecting and cleaning the unit.**
Otherwise, may cause electric shock.



Earth grounding connection

- **Ensure the unit is properly grounded.**
Otherwise, may cause electric shock during malfunction or short circuit.
- **Installation work should be done by the qualified technician.**
Incorrect wiring connection can cause electric shock and fire.
- **Be sure to install a residual current circuit breaker.**
Otherwise, this may cause electric shock.
- **Use a type whose contact points are at least 3mm apart.**
 - ※ Please use the products of CCC standard.
 - ※ Recommended residual current circuit breaker (for ground-fault protection).
(Use a single-phase 2-line, AC 220~240V/50/60Hz cable with a 20A rated current, 15mA-type rated operating current)



WARNING

If you don't use this unit properly or follow the safety guidelines carefully, it would lead to serious personal injury or property damage.



Prohibited

- **Do not let children hang from the unit.**
Otherwise, this may cause the unit to drop.



Important!
Follow instructions

- **Always use the unit with the drain tank and air filter attached.**
Once water enters the unit inside, short circuit or electric shock occurs.
- **Wear gloves when inspecting and cleaning the unit.**
Otherwise, this may cause injury.
- **If the unit does not start, or works abnormally, turn off the power switch and ground -fault breaker and contact your dealer for inspection and repair.**
Otherwise, this may cause electric shock or fire due to short circuit.
- **Do not use in the following places:**
 - Where the unit may come into direct contact with water.
 - Where the unit is under direct or strong sunlight.
(this may cause sensor to malfunction)
 - Where the condensation may form within the unit.

▲ Safety precautions before installing the unit

- Do not attempt to install the unit with the power on (power cord).
Otherwise, this may cause electric shock.
- The installation location should be strong enough to support the unit, and the unit should be installed firmly on the surface.
Otherwise, this may cause personal injury due to the unit falling.
- Wear gloves when installing the unit.
Otherwise, this may cause injury.

Features:

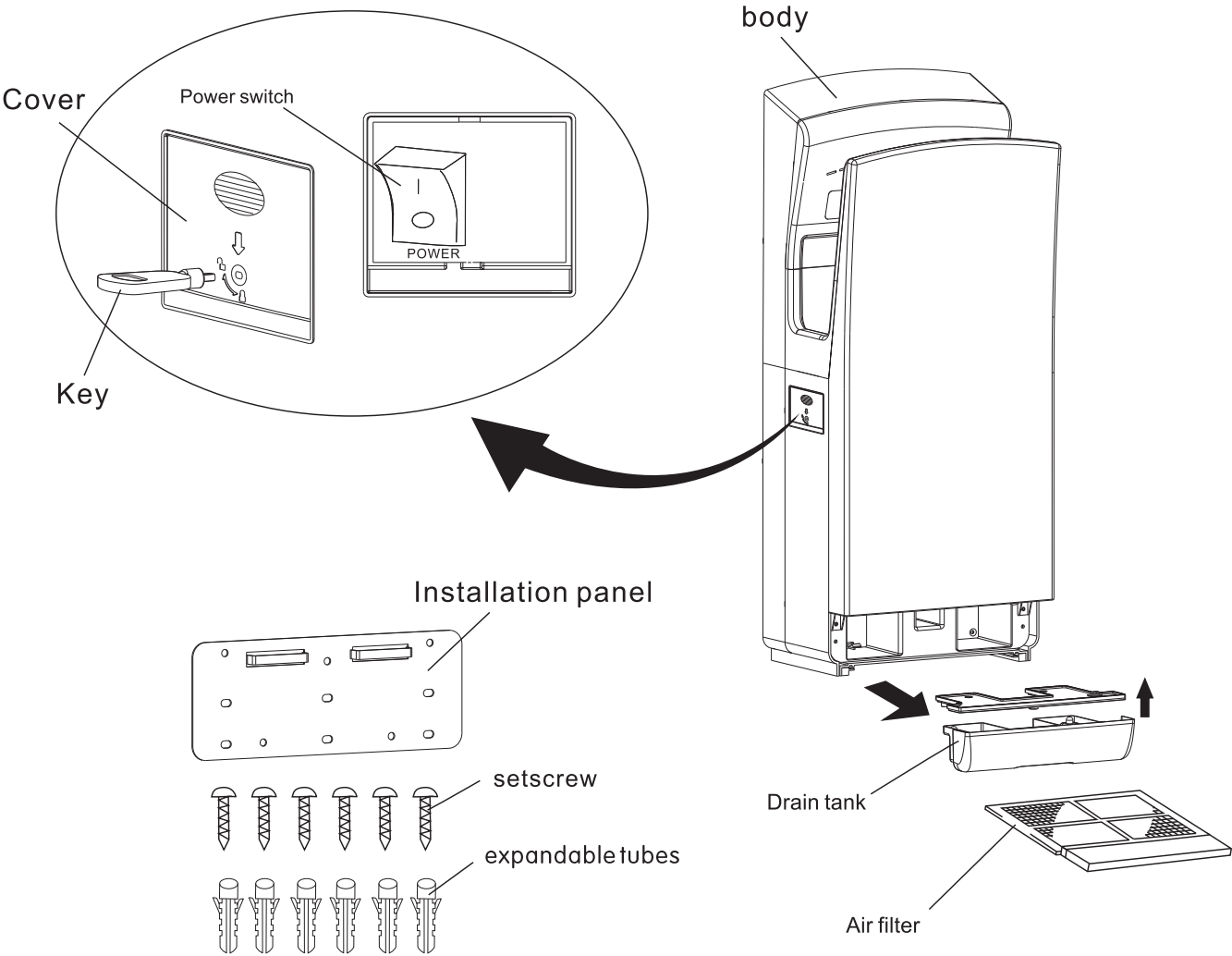
- “No touch” hand drying ensures complete hygiene.
- High-speed drying your wet hands, economical of money for paying electric charge alone.
- A tamper-proof timer built is to prevent overuse.
- No need paper towels, ease of maintenance
- No pollution, with antibacterial coating.

To prevent overusing the unit, the built-in timer will stop the unit after 30 seconds. To continuous use, draw back you hands and put them in again.

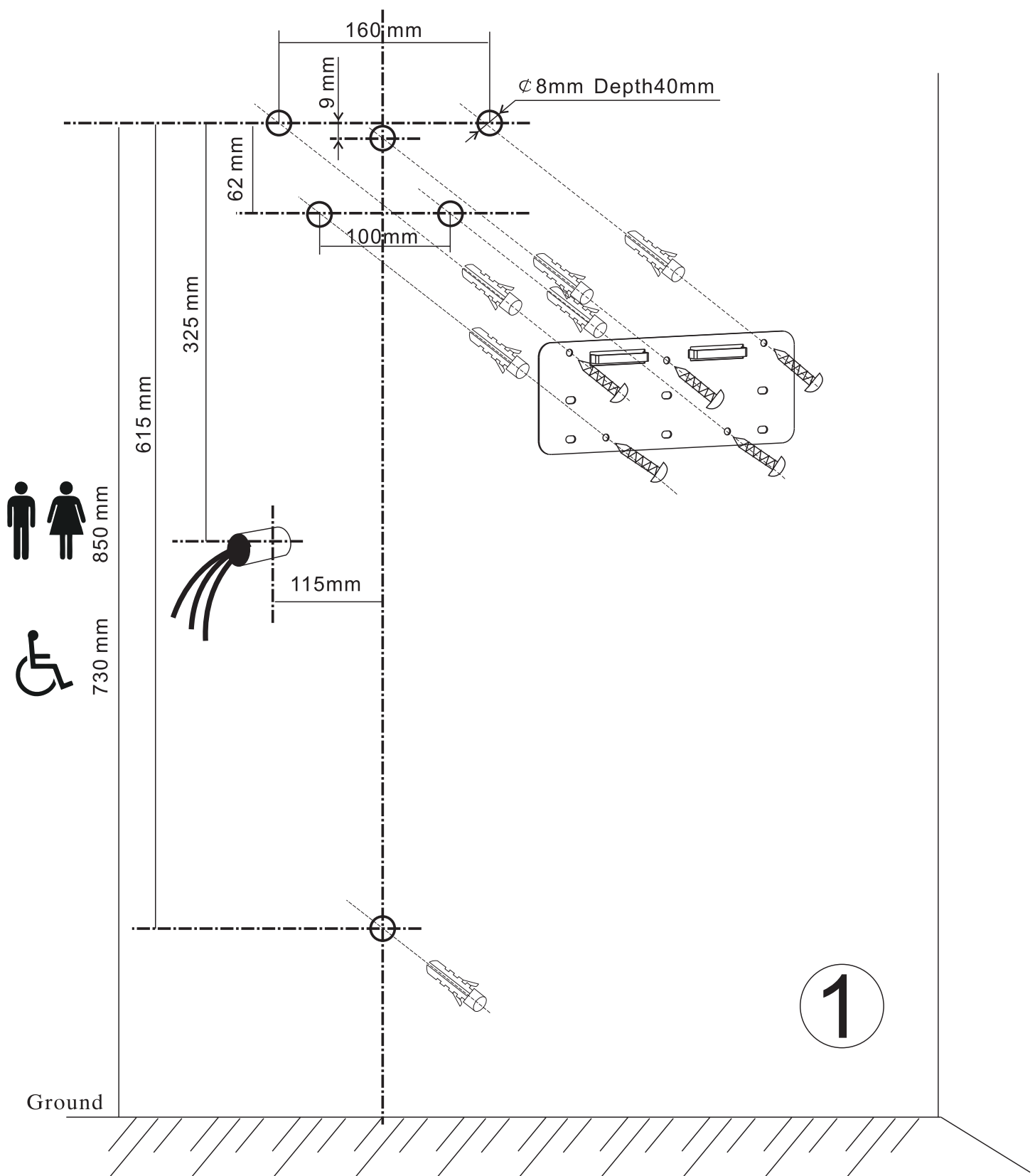
Technical Parameters:

Rated Voltage	AC220-240V	Waterproof Grade	IPX4
Rated Frequency	50/60HZ	Heating conditions	Ambient temperature<25℃
Rated Power	1650W	Air speed	95m/s
Motor Power	800W	Drying Time	10 seconds
weight	12KG	Overall size(mm)	300 × 222 × 730

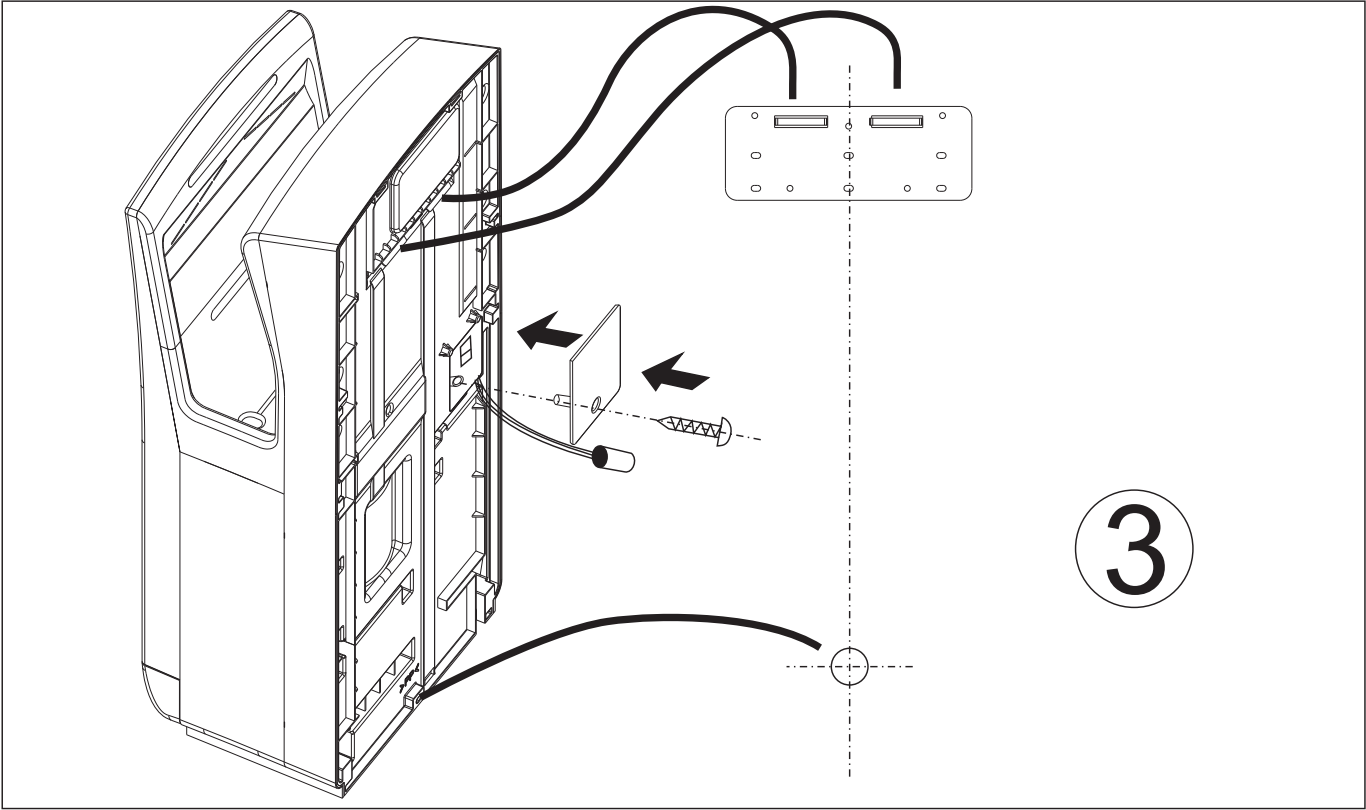
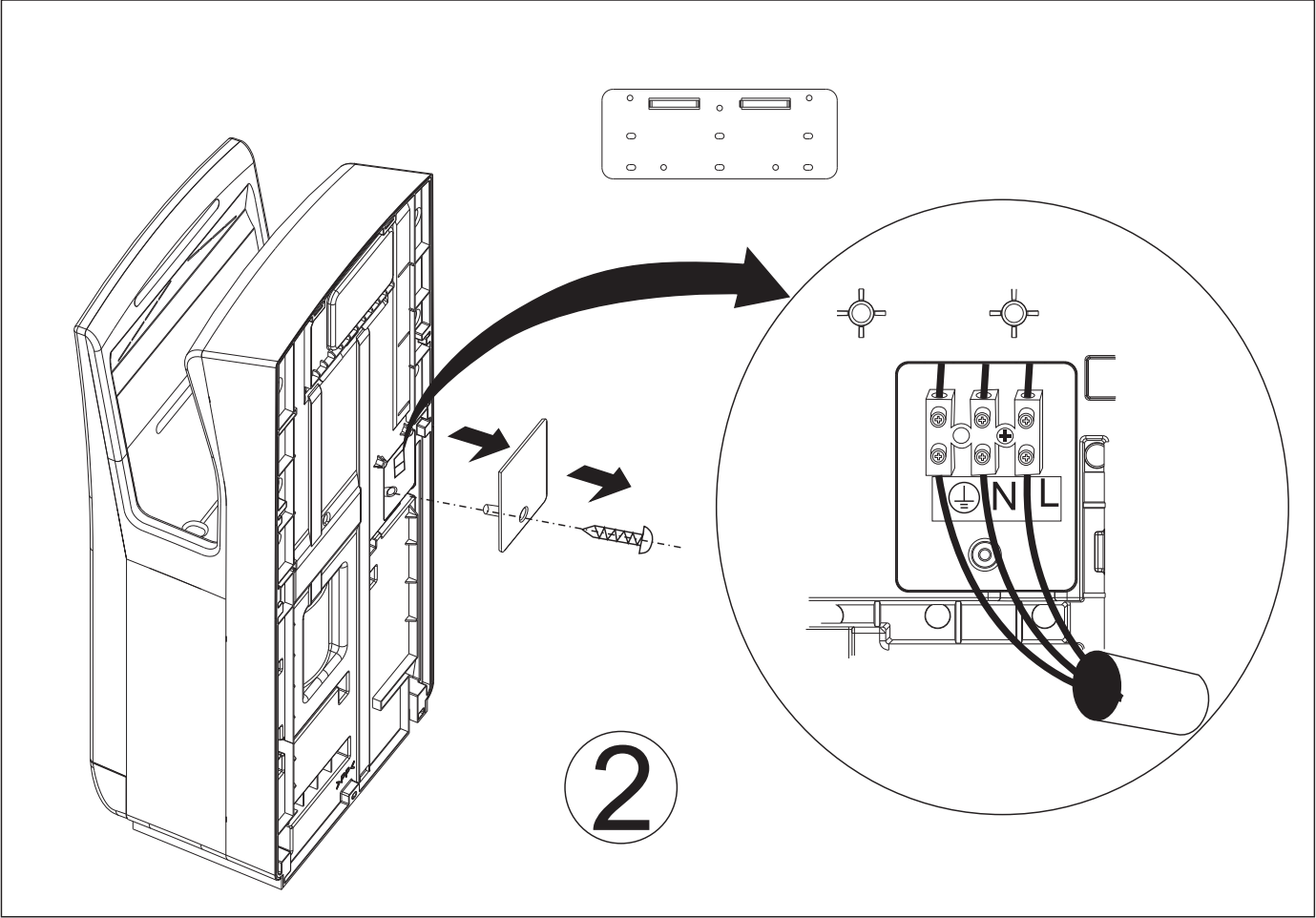
Name of the various components



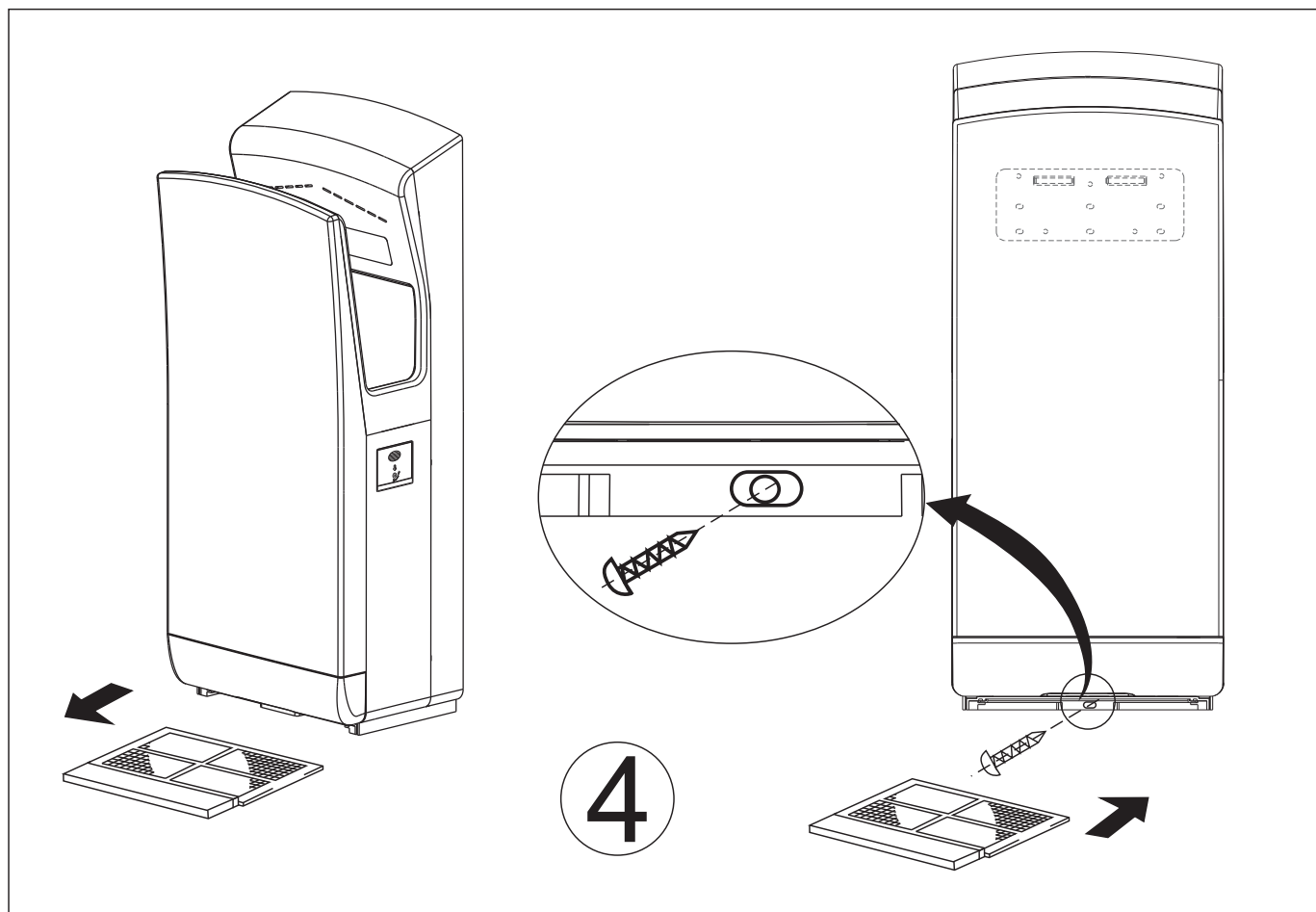
Installation methods:



Installation methods:



Installation methods:



Routine Cleaning

Cleaning the Unit body Before it gets obviously dirty

- Clean the unit with a soft cloth.
If the unit gets very dirty, clean with a soft cloth dampened with neutral agent, then clean with a dry soft cloth.
- Remove the dirt from the sensor. (to prevent malfunction)



Note

- Only use the neutral cleaning agents.
- Do not use thinner, acidic or alkaline toilet cleaners, or nylon brush. (Otherwise, they may damage the smoothness of surface)
- Only use the alcohol to clean the hand-drying area.
(Do not use alcohol anywhere else)
- ※Alcohol here means the alcohol used for disinfection (concentration below 83%).
- If the chemical cloths used, please read their instructions first.
- Disinfecting agents will damage your unit.



WARNING



- Before you clean the unit, turn off the power switch.
- Do not splatter water on the unit



Caution

- Wear gloves when cleaning.

- The antibacterial coating is effective when the bacteria exposed the coated surfaces (See the shade areas on the figure)
- The antibacterial coating becomes not effective when the surfaces get very dirty.

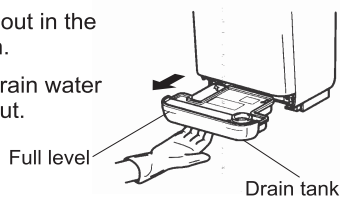
Draining and Cleaning the drain tank Before it fills up (at least once a week)

- The water blown off the hands is called “drain water”.
- Empty the drain water at any moment, in order to prevent accumulated water from exceeding the full level.
- It will start smelling if the accumulated water remains in the tank for too long time.

1

Pull the drain tank out in the horizontal direction.

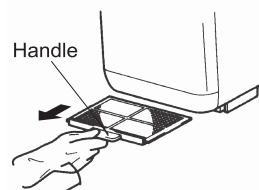
This ensures the drain water does not splatter out.



1

Remove the air filter

- Pull the air filter out by the handle.



2

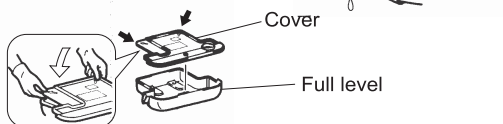
1. Open the cover and empty the water.

- Pull the cover up with your fingers in the direction of the arrow on top of the cover, and then remove the cover completely.

2. Wash out the interior of the drain tank.

3. Close the water tank cover, and Re-attach it to the unit as original.

- Confirm the two locations are firmly inserted.



2

1. Cleaning the air filter

- Beat it lightly by hand or use a vacuum cleaner.

2. Re-attach to the unit.

- insert it all the way in, until it stops. (If it is not in place, the dirt or dust will enter the unit and shorten its service life.)

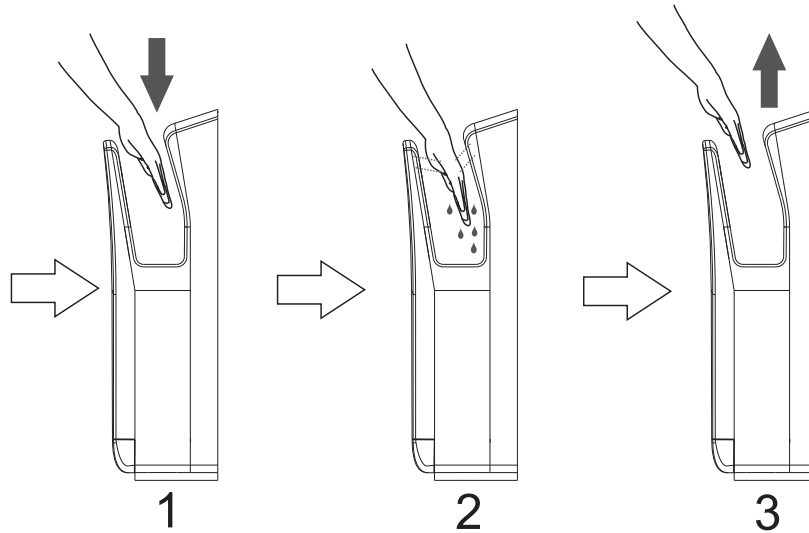


3

Add 200cc (around 1 cup) of water through the drain hole.
(to prevent it from getting clogged)

- Use the unit after confirming that the water tank is in place.





Troubleshooting

If the following problems occur, please perform checks and fix.

Problem	Check	Action
No air blows even if hands are inserted	Do the display indicators lights up? Is the power switch on? Are you putting your hands all the way in?	<ul style="list-style-type: none"> • Turn the ground-fault circuit breaker on. • Turn the power switch on. • Put hands all the way in.
The unit does not stop blowing	Is the sensor blocked by the dirt or dust?	<ul style="list-style-type: none"> • Turn the power switch off, and then, after all the lamps in the display have gone off, remove the dust matter.
No hot air comes out	Heater is built-in, is the heater sensor dirty?	<ul style="list-style-type: none"> • Turn the power switch off. Remove the front cover, then remove the cover of terminal box, check the 3 fuses (terminal connector) whether burnt or not.

If the above actions do not work, turn off the power and the ground-fault circuit breaker, and call your dealer to inspect and repair it if necessary. (Costs are as per agreement with the dealer)

NOTICE ABOUT RECYCLING



Your product is designed and manufactured with high quality materials and components which can be recycled and reused. This symbol means that electrical and electronic equipment, at their end-of-life, should be disposed of separately from your household waste. Please dispose of this equipment at your local community waste collection/ recycling centre.

In the European Union there are separate collection systems for used electrical and electronic products.

Please help us to conserve the environment we live in!

DECLARATION OF CONFORMITY

Herewith, Amiridis-Savvidis S.A. states that this product, complies with the requirements of below directives:

EMC Directive: 14/30/EU

Low Voltage Directive: 14/35/EU

RoHS Directive: 11/65/EU & 15/863/EU

CE-marking Directive: 93/68/EEC



The detailed declaration of conformity can be found at www.morris.gr

Exclusive importer in Greece:


Amiridis – Savvidis S.A.

87A, 17th Noemvriou str, P.C. 55535

Thessaloniki – Greece

T: +302310944944 | F: +302310944940

www.amiridis-savvidis.gr



EXCLUSIVE DISTRIBUTOR
Amiridis - Savidis S.A.
87A, 17th November str.
55535, Pylea, Thessaloniki
Tel. 2310 944944
Fax. 2316 006650
www.morris.gr