



# MORRIS



Wi-Fi

Instructions

Manual

**Smart Air Conditioners**

This description is applied to Air Conditioners with Wi-Fi function. Please read the manual carefully before using the product and it for future reference.



## Statement

---

### **Federal Communication Commission Interference Statement**

This device complies with part 15 of the FCC Rules. Operation is subject to the following two conditions:

(1) This device may not cause harmful interference, and (2) this device must accept any interference received, including interference that may cause undesired operation. Any Changes or modifications not expressly approved by the party responsible for compliance could void the user's authority to operate the equipment. Note: This equipment has been tested and found to comply with the limits for a Class B digital device, pursuant to part 15 of the FCC Rules. These limits are designed to provide reasonable protection against harmful interference in a residential installation. This equipment generates uses and can radiate radio frequency energy and, if not installed and used in accordance with the instructions, may cause harmful interference to radio communications. However, there is no guarantee that interference will not occur in a particular installation. If this equipment does cause harmful interference to radio or television reception, which can be determined by turning the equipment off and on, the user is encouraged to try to correct the interference by one or more of the following measures:

Reorient or relocate the receiving antenna.

Increase the separation between the equipment and receiver.

Connect the equipment into an outlet on a circuit different from that to which the receiver is connected.

Consult the dealer or an experienced radio/TV technician for help.

### **FCC Radiation Exposure Statement**

This equipment complies with FCC radiation exposure limits set forth for an uncontrolled environment. This equipment should be installed and operated with minimum distance 20cm between the radiator & your body. RF Exposure: A distance of 20cm shall be maintained between the antenna and users, and the transmitter module may not be co-located with any other transmitter or antenna.

### **ISED Statement**

Innovation, Science and Economic Development Canada | CES-003 Compliance Label: CANICES-3(B)/NMB-3(B) This device contains licence-exempt transmitter(s)/receiver(s) that comply with Innovation, Science and Economic Development Canada's licence-exempt RSS(s). Operation is subject to the following two conditions:

1. This device may not cause interference.

2. This device must accept any interference, including interference that may cause undesired operation of the device. This equipment complies with SED RSS-102 radiation exposure limits set forth for an uncontrolled environment. This equipment should be installed and operated with a minimum distance of 20 cm between the radiator and any part of your body.

Compliance declaration according to the NMB-003 of Innovation, Science and Economic Development Canada: CANICES-3(B)/NMB-3(B)

The license-exempt transmitter/receiver contained in this device complies with the Innovation, Science and Economic Development Canada RSS applicable to license-exempt radio devices. Operation is authorized under the following two conditions:

1. This device must not cause interference;

2. The device must accept any radio-electrical interference it may suffer, even if the interference is likely to compromise its operation.

# CONTENTS

---

1.WIFI module specifications.....	1
2.WIFI module installation method (optional).....	2
3.APP Download.....	3
4.Account registration.....	4
5. Login account.....	5
6. How to connect smart devices.....	6
7.Smart air conditioner APP control.....	8
8.Device management and sharing.....	14
9.Profile.....	17
10.Wifi attentions.....	18

# 1.WIFI module specifications

---

## 1.Wifi Module overview

The Wi-Fi Module consists of a highly integrated wireless radio chip W302 1119VP1 and some extra flash that has been programmed with Wi-Fi network protocol and plenty of software examples. TYAUX\_J includes ARM CM4F, WLAN MAC, 1T1R WLAN, maximum frequency reaches 125MHz, 256K SRAM, 2M byte flash, and various peripheral resources.

TYAUX\_J is an RTOS platform, embedded with all the Wi-Fi MAC and TCP/IP protocol function examples, users can customize their Wi-Fi product by using these software examples.

## 2.Features

Built-in low power-consuming 32-bit CPU functioning as an application processor

- Basic frequency: 125 MHz
- Working voltage: 12 V
- Peripherals: one UART
- Wi-Fi connectivity
  - 802.11b/g/n20/n40
  - Channels 1 to 14 at 2.4 GHz
  - WPA/WPA2 security mode
  - +18 dBm output power in 802.11b mode
  - Smart network configuration function (for Android and iOS devices)
  - PCB On board antenna
  - Working temperature: -20°C to +85°C

## 3.Module interfaces

dimensions: 19.5 mm±0.35mm(W)×35.5±0.35mm(L)×3.5±0.15mm(H),the PCB thickness is 1.0mm±0.1 mm.

## 4.Basic RF features

Parameter	Description
Frequency band	2.412 GHz to 2.4835 GHz
Wi-Fi standard	IEEE 802.11b/g/n (channels 1 to 14)
Data transmission rate	11b:1,2,5.5, 11 (Mbps); 11g:6,9,12,18,24,36,48,54(Mbps); 11n: HT20 MCS0~7; 11n: HT40 MCS0~7
Data transmission rate	802.11b: 1, 2, 5.5, or 11 (Mbit/s)
Antenna type	PCB On Board antenna

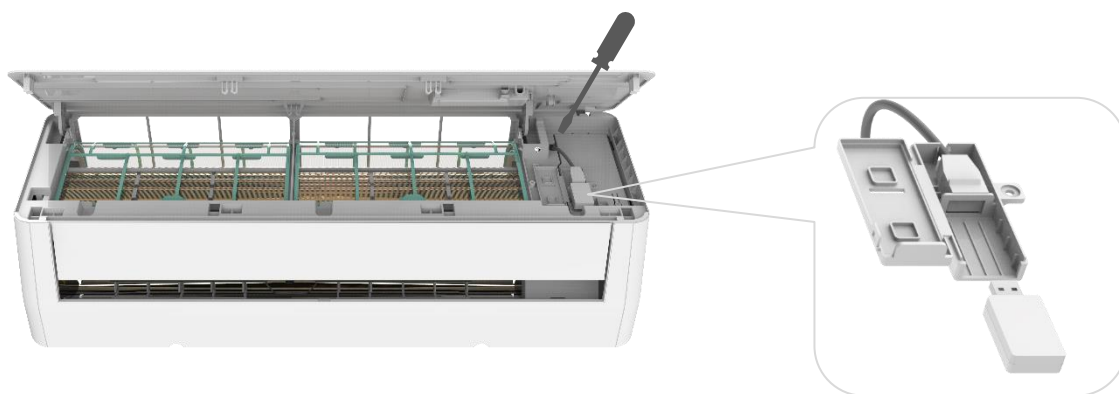
## 2.WIFI module installation method (optional)

---

1. Open the indoor unit panel of the air conditioner.



2. Unscrew the fixing screws of the WIFI box and remove the WIFI box. Insert the WIFI module in the direction shown in the diagram.



**Note:**

The installation of WIF modules on different internal devices may vary, and the diagram is for reference only.

### 3.APP Download

---



#### 1.For Android smart phone

Method1: Please scan the QR code with a browser scanner, download and install the APP.

Method2: Open the Google "Play Store" on your smart phone and search "Smart Life", download and install the APP.



#### 2.For IOS smart phone

Method1; Please scan the QR code and follow the tips to get into "AppStore", download and install the APP.

Method2: Open the Apple "AppStore" on your smart phone and search " Smart Life",download and install the APP

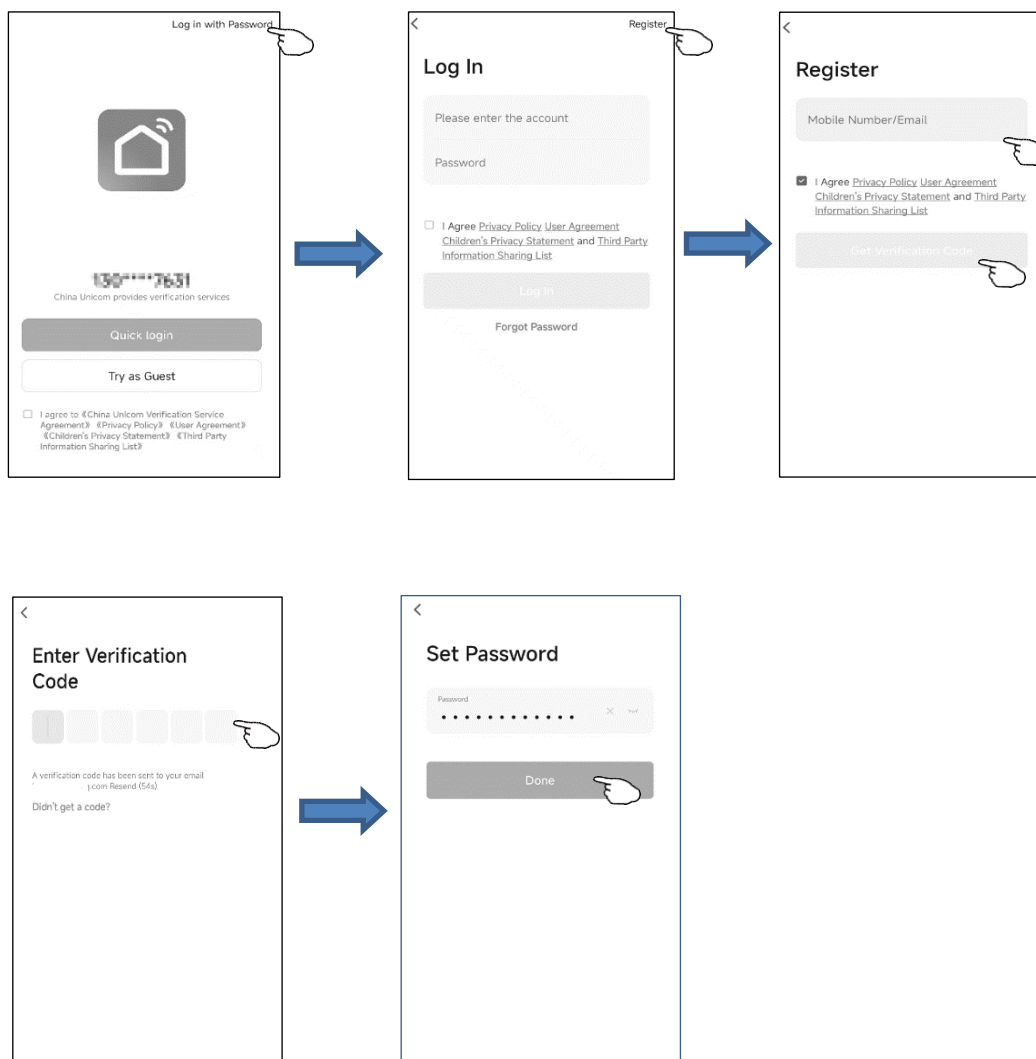


#### Note:

Please enable the permissions of Storage/Location/Camera for this APP when installing. Otherwise it will have some problems when operating.

## 4.Account registration

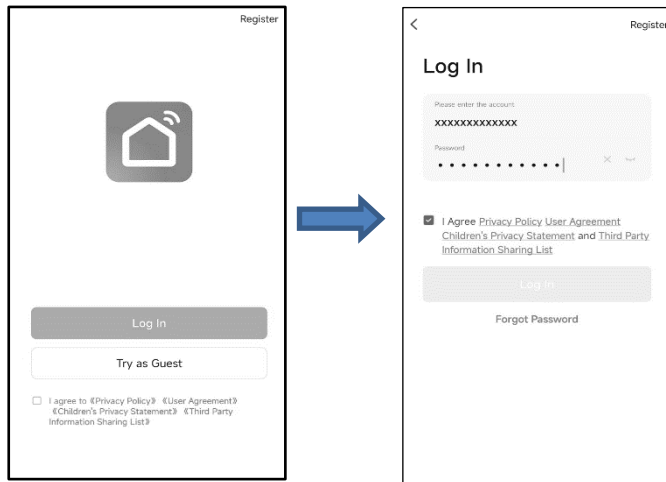
1. If you don't have any account please tap button "Log in with Password"
2. tap Upper right corner button "Register"
3. Enter your e-mail address, Tap the button "Get Verification Code"
4. Enter the verification code you received from e-mail.
5. Set the Password with 6-20 characters including characters and numbers.
6. Tap "Done".





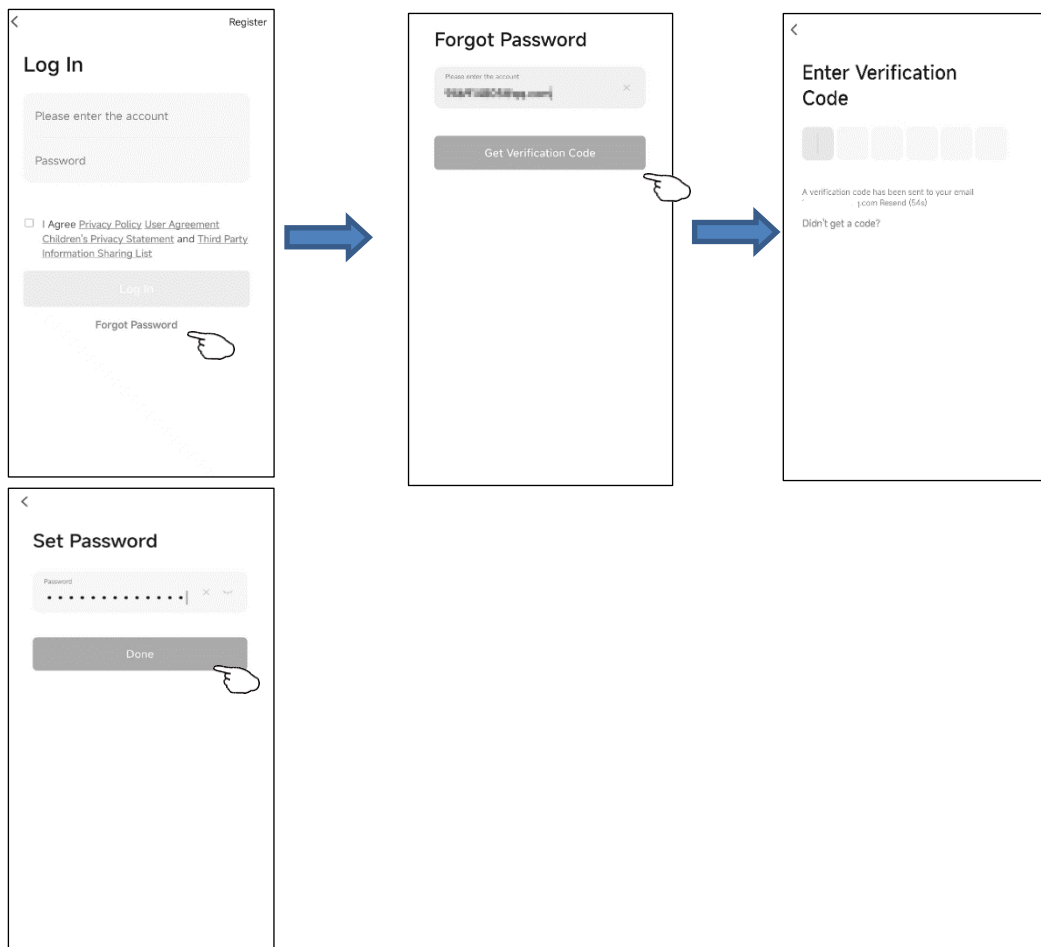
## 5. Login account

1. Tap "LogIn"
2. Enter your registered account and password.
3. Tap "Log in" button.



If you forgot the password or you want to reset the password, operate as below:

4. Tap "Forgot password".
5. Enter your account(e-mail address) and tap button" Get Verification Code ".
6. Enter the verification code received by your e-mail.
7. Set the new password and tap button "Done"

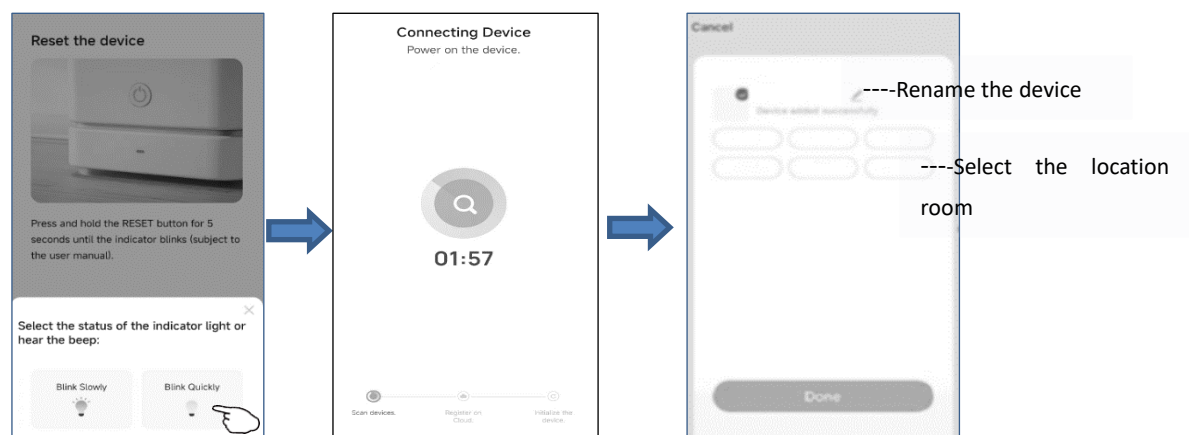
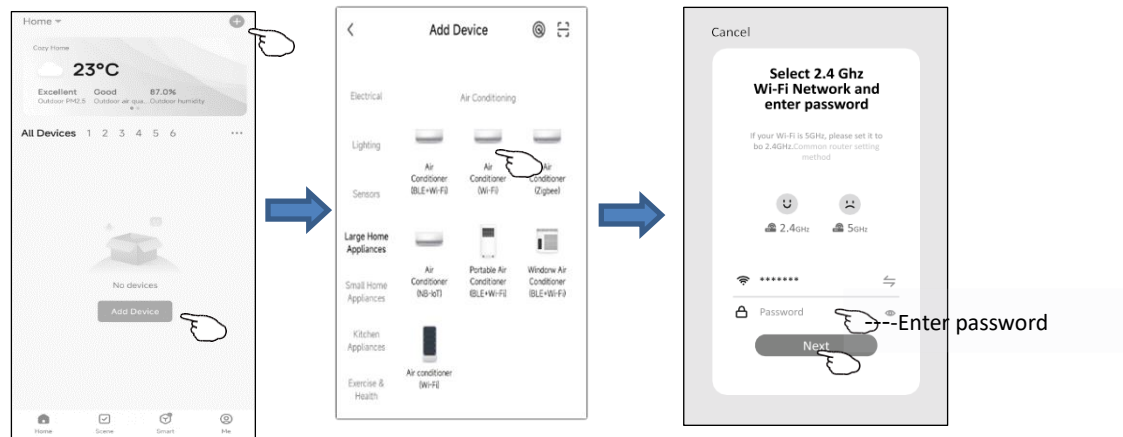


## 6. How to connect smart devices

There are 2 methods to add the device.

### 1-EZ mode.

- 1.Power on the indoor unit, no need to launch the air conditioner.
- 2.Click "+" in the upper right corner of the "Home" screen or tap "Add device" on the room which has no device.
- 3.Tap the "Air conditioner(Wi-Fi)" logo.
4. Follow the comments on the next screen to reset the Wi-Fi module or press the remote "Display" button six times within 7s o reset the Wi-Fi module, Please make sure that WIFI icon on device is **quickly flashing ( 3 times/s)**. then check "Confirm the indicator is blinking rapidly" and tap "Next".
- 5.Input the password of the Wi-Fi which the same as your smartphone connected, then tap "Next", then tap "Blink Quickly".
- 6.You can see the percent rate of connecting process, which will be successfully connected to the cloud later.

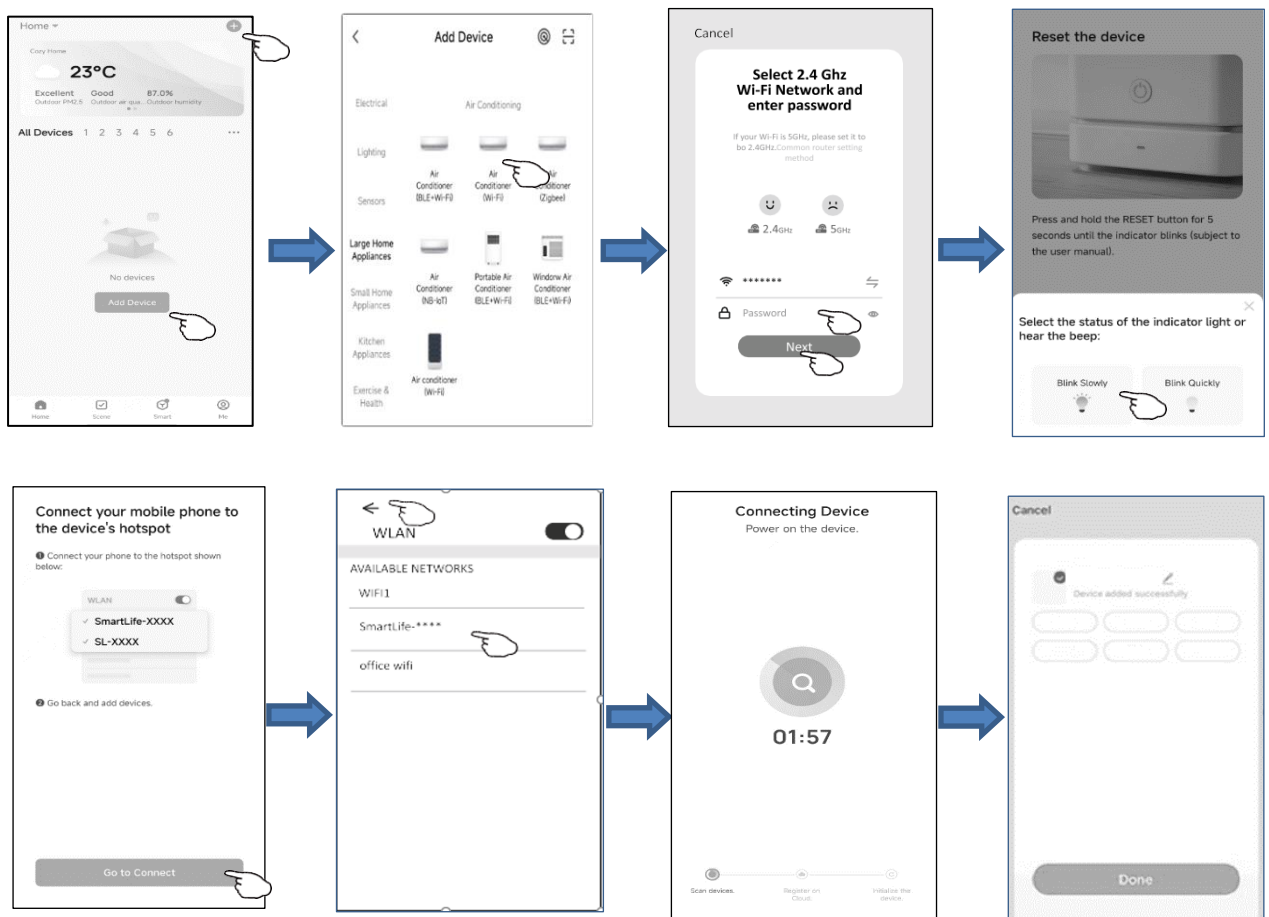


## 6. How to connect smart devices

There are 2 methods to add the device.

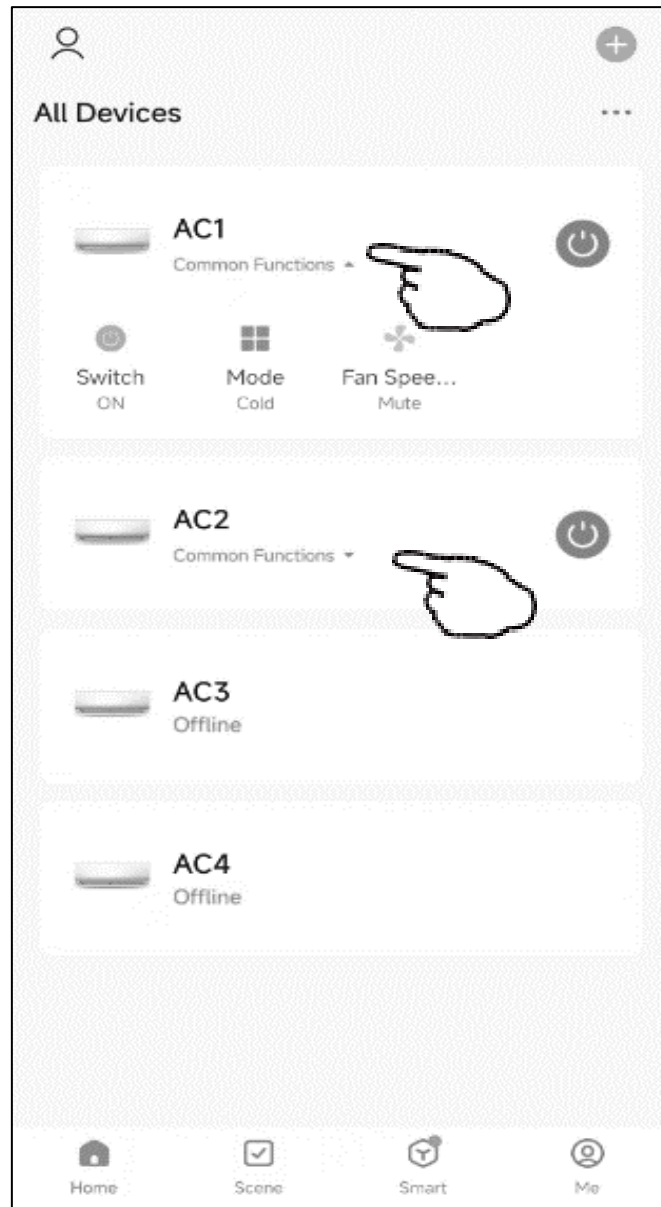
### 2-AP mode.

- 1.Power on the indoor unit, no need to launch the air conditioner.
- 2.Click "+" in the upper right corner of the "Home" screen or tap "Add device" on the room which has no device.
- 3.Tap the "Air conditioner(Wi-Fi)" logo.
4. Follow the comments on the next screen to reset the Wi-Fi module or press the remote "Display" button six times within 7s o reset the Wi-Fi module, Please make sure that WIFI icon on device is **slowly flashing ( 1.5times/s)**. then check "Confirm the indicator is blinking rapidly" and tap "Next".
- 5.Input the password of the Wi-Fi which the same as your smartphone connected, then tap "Next", then tap " **Blink Slowly** ".
- 6.You can see the percent rate of connecting process,which will be successfully connected to the cloud later

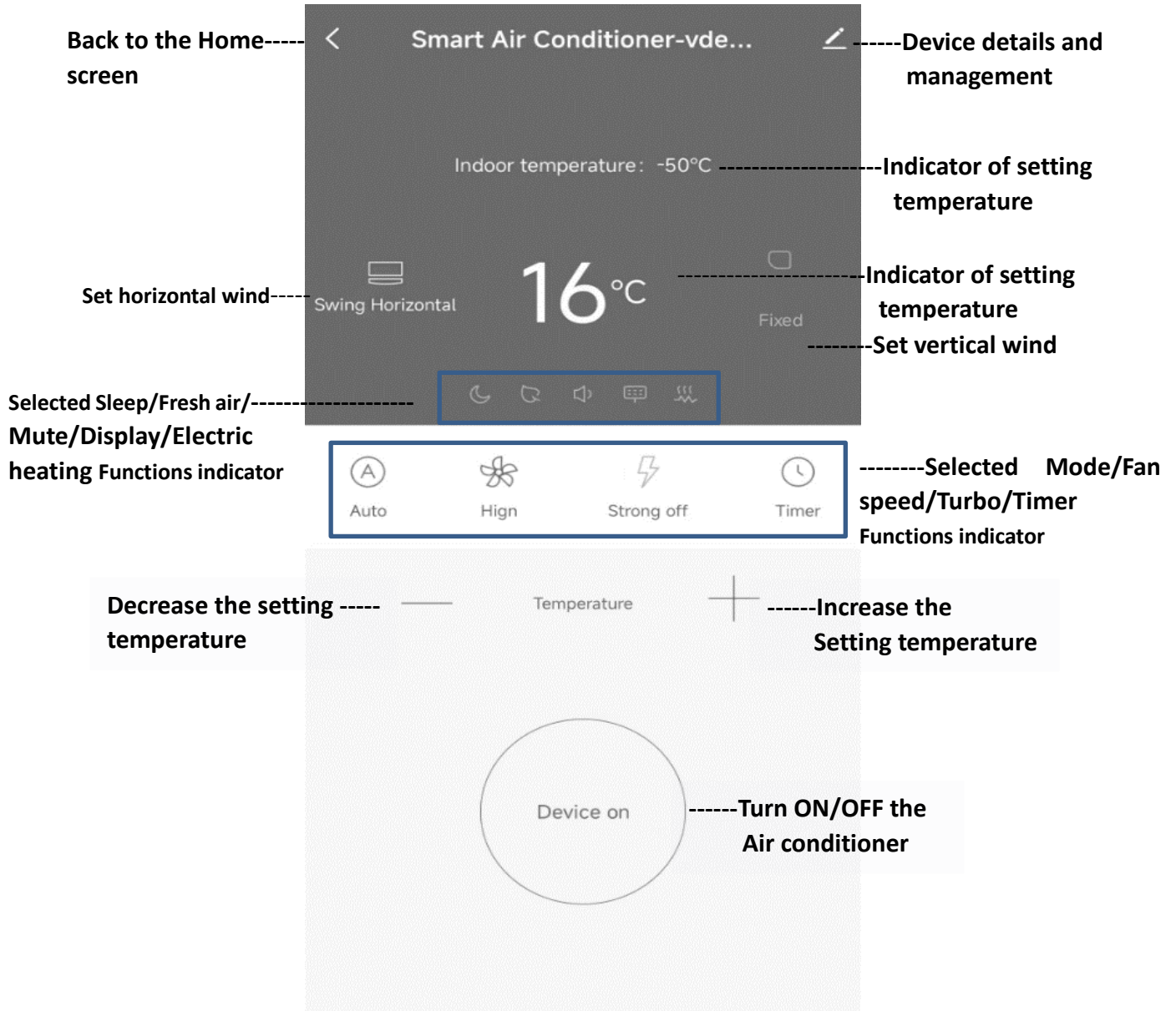


## 7.Smart air conditioner APP control

- 1.The device control screen will pop up automatically after adding the device.
- 2.The device control screen will pop up manually by tapping the device name on the home screen.



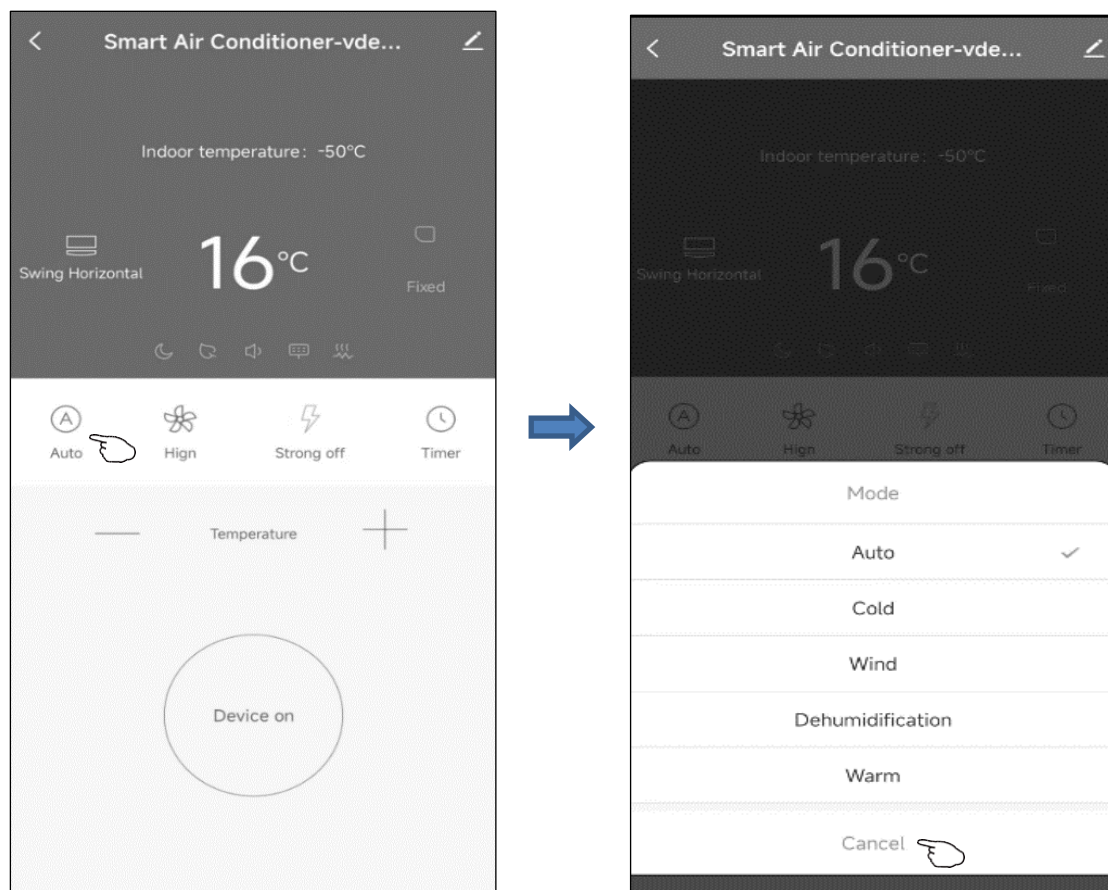
# The main control interface



## 7. Smart air conditioner APP control

### Control-Mode setting

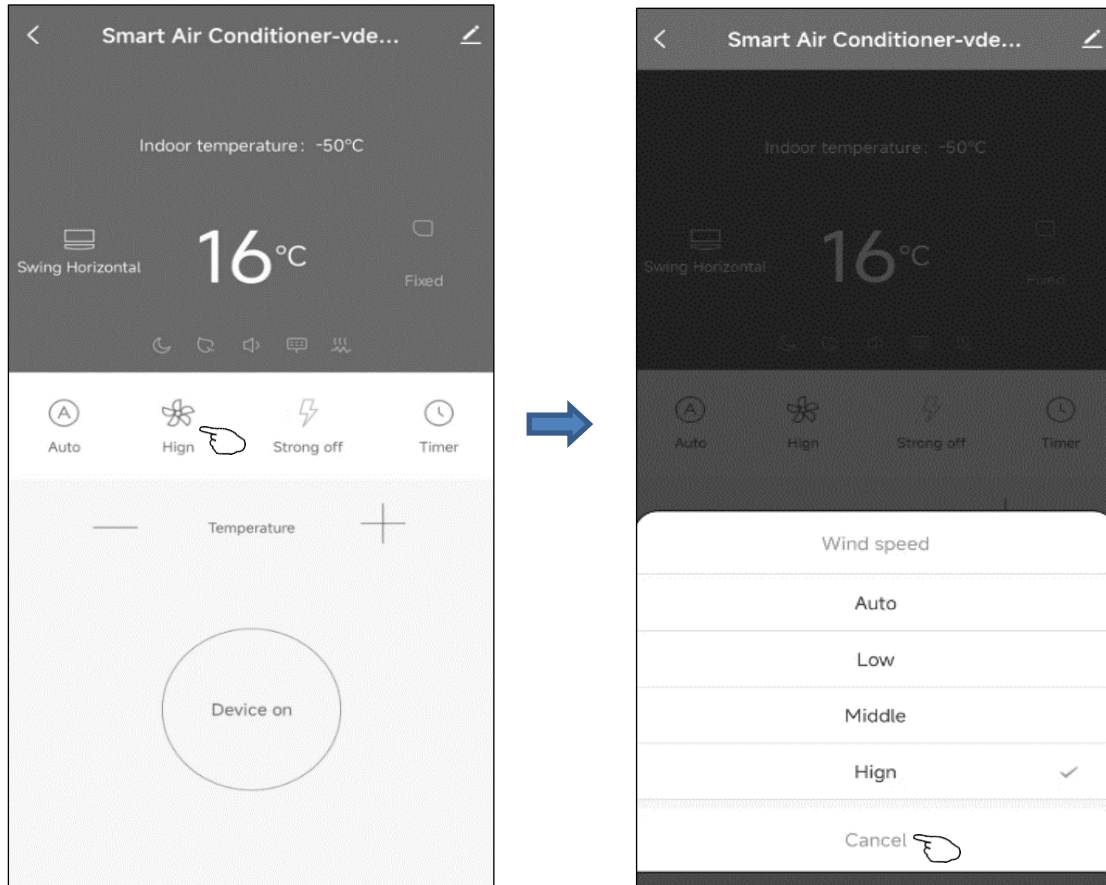
1. Tap Mode to pop up the Mode screen.
2. Select one of the mode Auto/Cold/Wind/Dehumidification/Warm.
3. Tap cancel to cancel the Mode setting.



## 7.Smart air conditioner APP control

### Control-Select fan speed

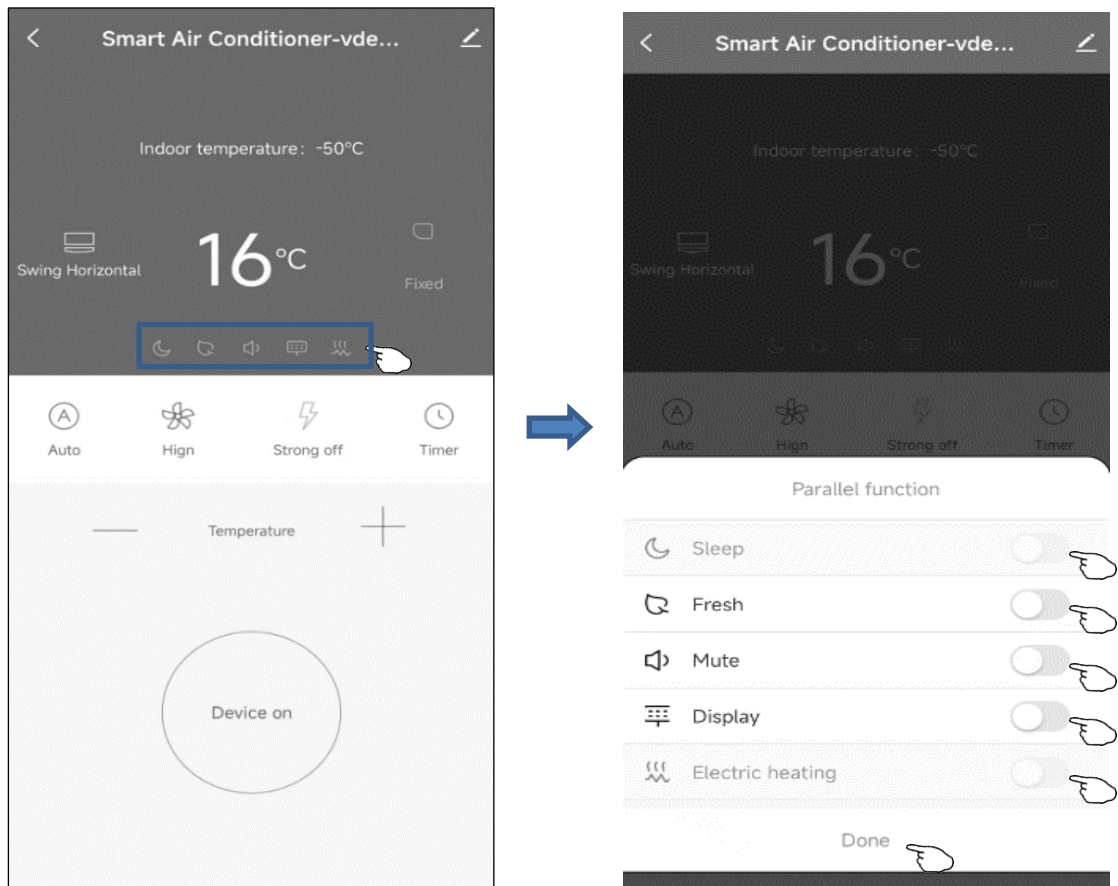
- 1.Tap Fan to pop up the Fan screen.
- 2.Select one of the fan speed High/med/Low/Auto.
- 3.Tap cancel to cancel the selection.



## 7.Smart air conditioner APP control

### Control-Function setting

- 1.Tap Function to pop up the Function screen.
- 2.Select one of the functions Sleep/Fresh/Mute/Display/Electric heating.
- 3.Tap cancel to cancel the Function setting.

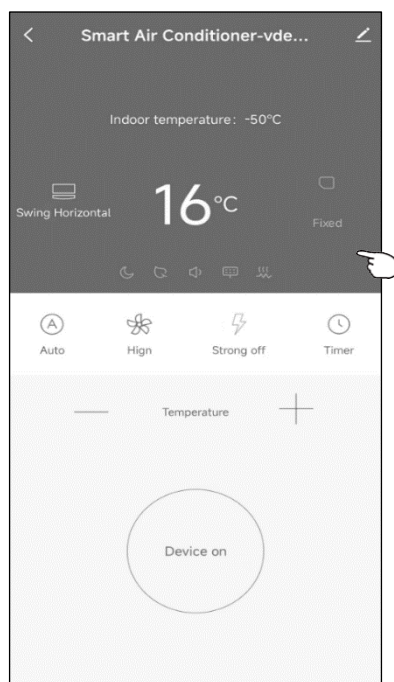




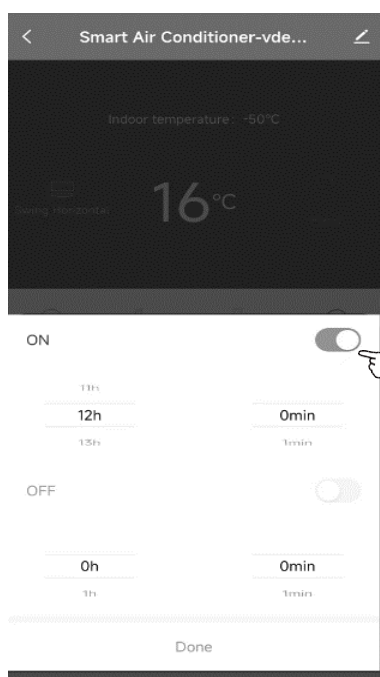
## 7.Smart air conditioner APP control

### Control-Timer adding

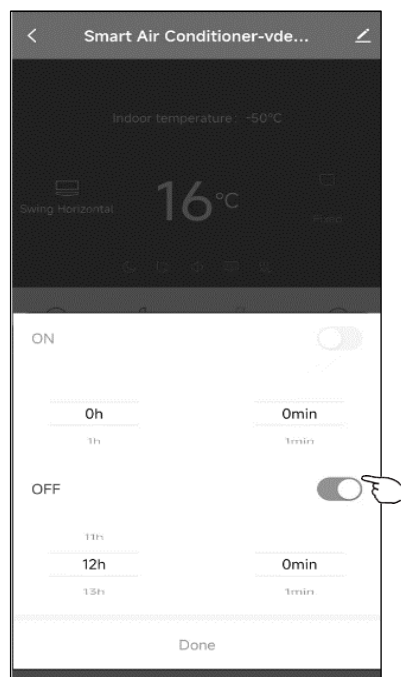
- 1.Tap Timer to pop up the Add Timer screen.
- 2.Select the time.
- 3.Tap Done to add the timer.



### Timer on(Only in power OFF state)



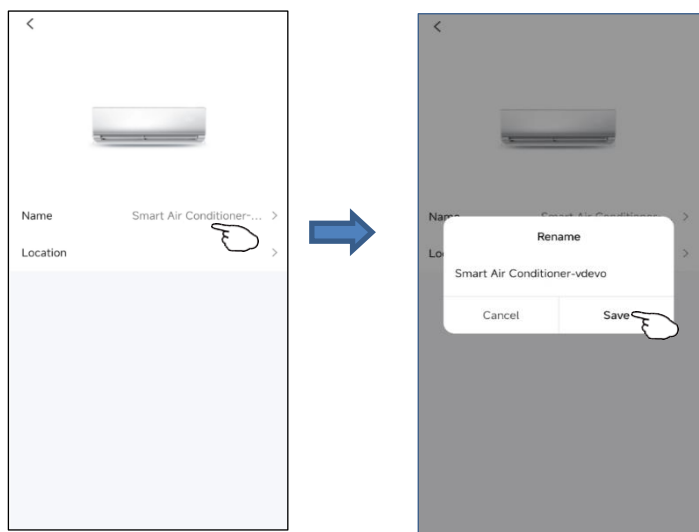
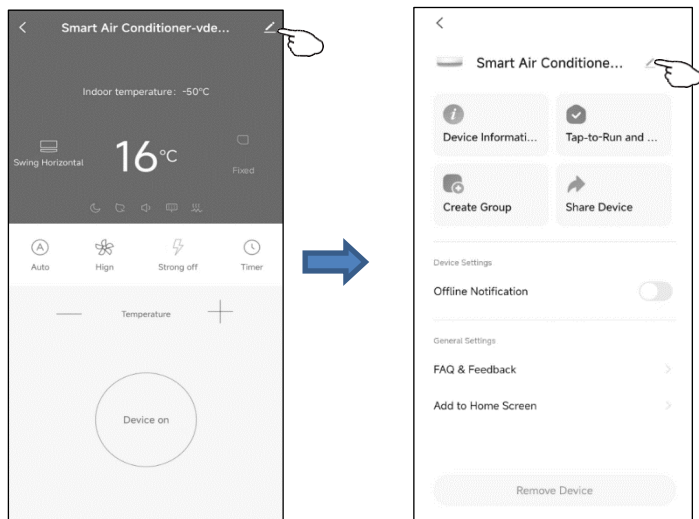
### Timer off(Only in power ON state)



## 8.Device management and sharing

### Modify device name

- 1.Tap on upper right corner of the main control interface.
- 2.select “Modify”.
3. type inthe new device name on the pop - up dialog,.
4. tap on “Save”.



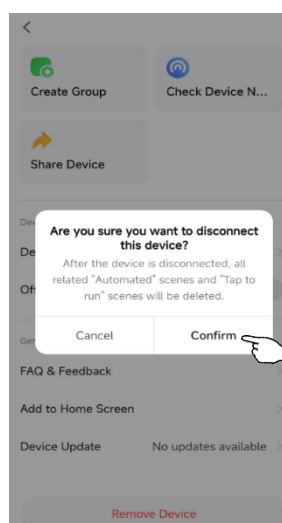
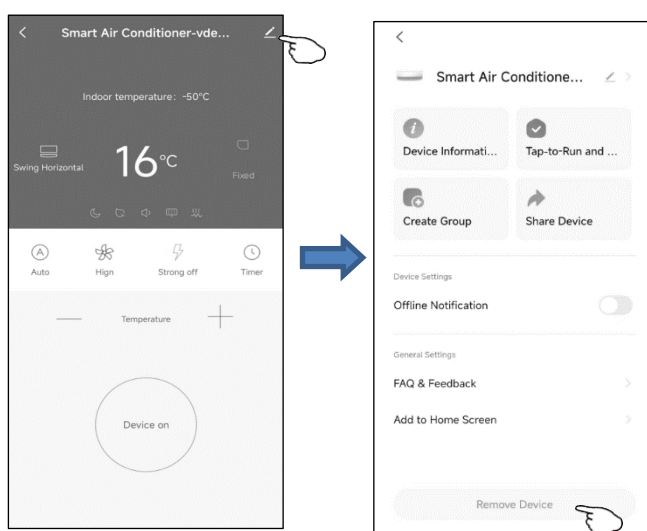
## 8.Device management and sharing

### Delete device or Reconnection

There are 2 methods to remove the device.

#### 1.APP removal

- 1.Tap on upper right corner of the main control interface.
2. select "Remove device".
- 3.the dialog pops up to notify you whether to remove device.
- 4.Tap on "Confirm", device will be removed from the App and switched to reset status.



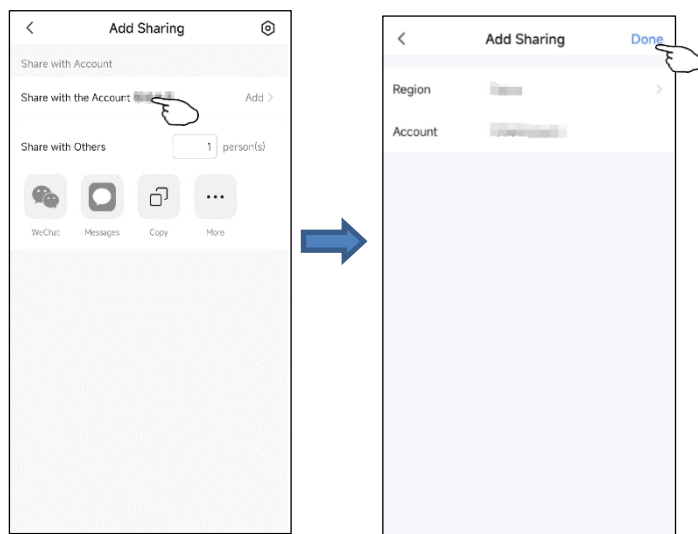
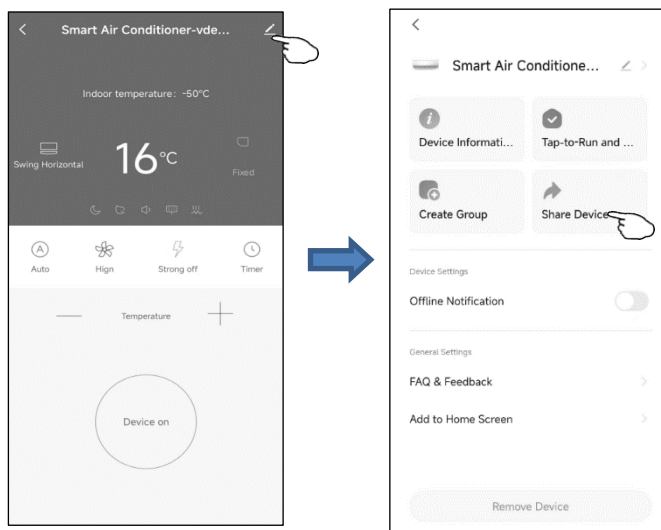
#### 2.Button removal

- 1.Long press the reset-button for 5s or or press the remote "Display" button six times within 7s o reset the Wi-Fi module — buzzer sounds — ,
- 2.the WIFI icon on device is quickly flashing, It will force an existing connection to be disconnected and needs to be re paired.

## 8.Device management and sharing

### Share device

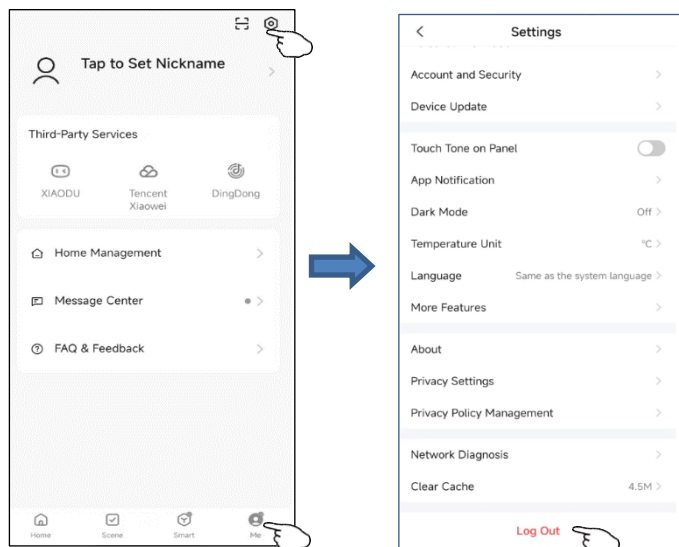
- 1.Tap on upper right corner of the main control interface.
2. select "share device".
3. input the account you want to share. in others account number, tap on"Confirm" . The person would receive the sharing settings and easily control the device with smartphone App.



## 9.Profile

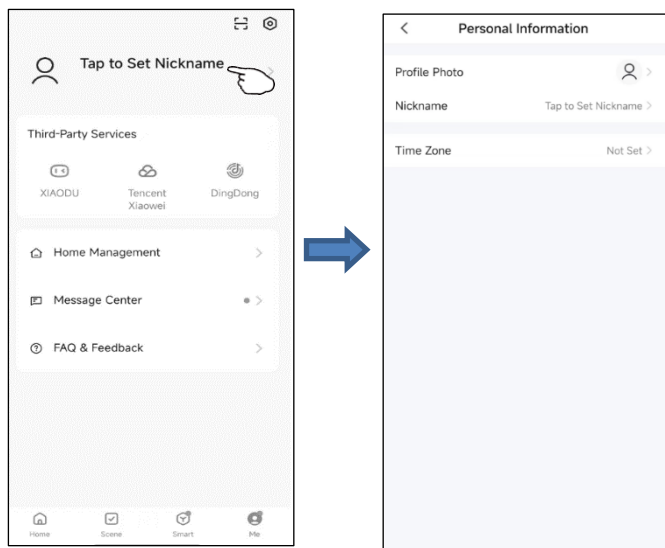
### 1. Logout

- 1.tap on “Me”.
- 2.Click on the settings in the upper right corner of the interface.
- 3.you could then logout the current account.



### 2.Modify profile information

On “Me” page, tap on the personal menu to modify the picture, name and other account information.



### 3. FAQ&Feedback

On “Me” page, tap on “Faq&qFeedback” menu to submit your feedback.

## 10.Wifi attentions

---

**1.Important notifications** To prevent unnecessary harm, please keep in mind of the following notifications Please don't use Wi-Fi where the wireless device is not allowed, such as airport, medical places and etc. Please don't turn on your smartphone in dangerous places, such as gas station, fuel or chemicals manufactures, and etc. Please don't use mismatched devices. Please find a qualified repair man to fix the Wi-Fi. Please refer to the user manual for the detailed connection methods, please don't randomly use mismatched devices.

### **2 Notifications:**

2.1 The App control quality is affected by your smartphone, Wi-Fi network, distance with router, and internet status. Sometime it is not very smooth. It has nothing to do with air conditioner itself; 2.2 If you find it failed to control with your smartphone, please check your internet status at first, then check whether it is successfully connected with air conditioner; If these circumstances are alright, please delete the device first on your App and start the procedures all over again from the step 3.2.

2.3 If you still cannot solve the issues with the methods above, please control the Air conditioner with your normal remoter and then request for after-sale service.

VER2.0



**Kalliopi Karyda & Co LP**

87A, 17th Novemeber str.  
55535, Pylea, Thessaliniki  
Tel. 2310 944944  
Fax. 2310 006650  
[www.morris.gr](http://www.morris.gr)